



Semi-Flexible & 1/16" thick: perfect for canvas installation



Available in a variety sizes, shapes & efficiencies

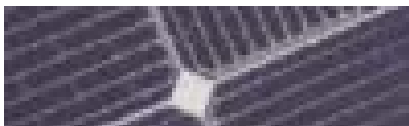


Highest Power, Lightest Weight



Highest Output SP Series using SunPower cells with up to 23% cell efficiency, the most powerful flexible solar panels

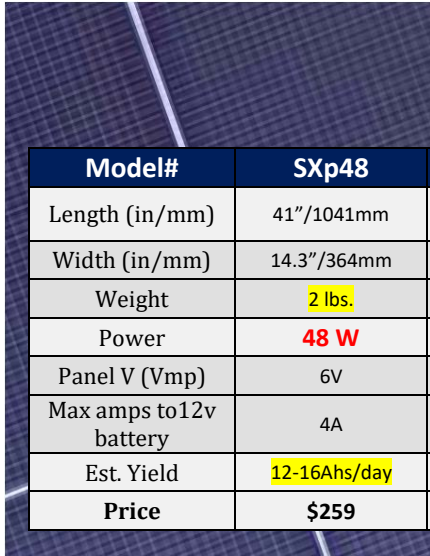
Model #	SP50L	SP50Q	SP62	SP75	SP100	SP112L	SP112Q	SP125	SP137
Length	44" /1109mm	24" /601mm	29" /728mm	33.7"/855mm	44"/1109mm	49"/1236mm	33.7"/855mm	54"/1363mm	59"/1490mm
Width	11.7"/292mm	21.7"/546mm	21.7"/546mm	21.7"/546mm	21.7"/546mm	21.7"/546mm	31.5"/805mm	21.7"/546mm	21.7"/546mm
Weight	1.8 lbs.	1.8 lbs.	2.3 lbs.	2.7 lbs.	3.3 lbs.	3.7lbs.	3.7lbs.	4.1 lbs.	4.5 lbs.
Power	50 W	50 W	62 W	75 W	100 W	112W	112W	125 W	137 W
Panel V (Vmp)	9V	9V	11V	13.3V	18V	20V	20V	22V	24V
Max I to 12V battery	4.2A	4.2A	5.2A	6.25A	8.4A	9.3A	9.3A	10.4A	11.4A
Est. Yield	12-20Ahs/day	12-20Ahs/day	15-22Ahs/day	19-25Ahs/day	25-40Ahs/day	28-45Ahs/day	28-45Ahs/day	32-50Ahs/day	34-55Ahs/day
Price	\$499	\$499	\$599	\$699	\$999	\$1099	\$1099	\$1199	\$1499



Super Rugged SR Series with new "Merlin" technology offers high efficiency with top durability in flexible solar panels

Model#	SR 50	SR 60	SR 70L	SR 70Q	SR 104	SR 138	SR 156L	SR 156Q
Length (in/mm)	41"/1041mm	48"/1205mm	53.4"/1364mm	28.5"/728mm	41.2"/1046mm	54"/1364mm	60"/1515mm	41.2"/1046mm
Width (in/mm)	14.3"/364mm	14.3"/364mm	14.3"/364mm	26.9"/683mm	26.9"/683mm	26.9"/683mm	26.9"/680mm	39.2"/996mm
Weight	2 lbs.	2.2 lbs.	2.6 lbs.	2.6 lbs.	3.5 lbs.	5.2 lbs.	5.9 lbs.	5.9lbs
Power	50 W	60 W	70W	70W	104W	138W	156W	156W
Panel V (Vmp)	6V	7V	8V	8V	12V	16V	18V	18V
Max current to 12v battery	4.1A	5A	5.8A	5.8A	8.7A	11.5A	13A	13A
Est. Yield	12-16Ahs/day	15-20Ahs/day	11-22Ahs/day	17-22Ahs/day	26-34Ahs/day	34-44Ahs/day	39-52Ahs/day	39-52Ahs/day
Price	\$379	\$459	\$529	\$529	\$759	\$999	\$1129	\$1129

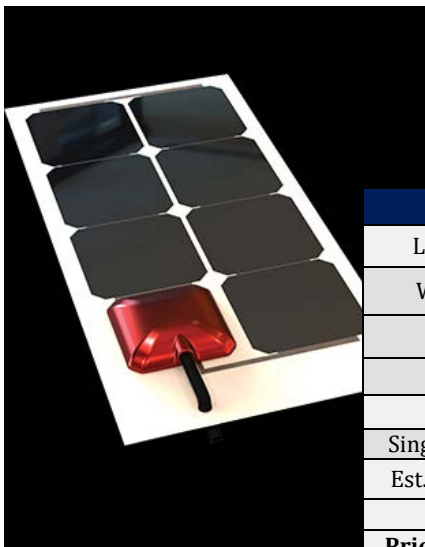
Check out the back to see more details and accessories. Contact us at info@oceanplanetenergy.com



SXp Series using "full square" cells

with up to 18% cell efficiency, great quality with the best price

Model#	SXp48	SXp56	SXp64L	SXp64Q	SXp96	SXp128	SXp145L	SXp145Q
Length (in/mm)	41"/1041mm	48"/1205mm	53.7"/1364mm	28.5"/725mm	41.2"/1046mm	54"/1364mm	60"/1515mm	41.2"/1041mm
Width (in/mm)	14.3"/364mm	14.3"/364mm	14.3"/364mm	26.9"/683mm	26.9"/683mm	26.9"/683mm	26.9"/680mm	39.2"/996mm
Weight	2 lbs.	2.2 lbs.	2.6 lbs.	2.6 lbs.	3.5 lbs.	5.2 lbs.	5.9 lbs.	5.9lbs
Power	48 W	56 W	64W	64W	96W	128W	145W	145W
Panel V (Vmp)	6V	7V	8V	8V	12V	16V	18V	18V
Max amps to 12v battery	4A	4.7A	5.3A	5.3A	8A	10.7A	12A	12A
Est. Yield	12-16Ahs/day	14-19Ahs/day	16-21Ahs/day	16-21Ahs/day	24-32Ahs/day	32-42Ahs/day	36-48Ahs/day	36-48Ahs/day
Price	\$259	\$279	\$349	\$349	\$479	\$659	\$769	\$769

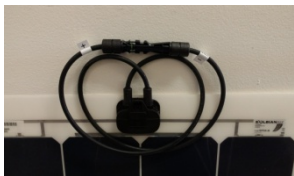


AiO (All in One) Series using Sunpower cells & a built-in waterproof charge controller for easy installation. (Wire directly to your battery)

All models available w/ a Forex Plastic Backing for added ruggedness

Model#	SP23 All1	SP23All1-wd	SP47L All1	SP 47Q All1	SP 72 All1
Length (in/mm)	23.7"/600mm	This has the same specs as the standard SP-23 All1 but comes with a thin wood backing for sturdy mounting and moving	44"/1109mm	23.7"/601mm	33.7"/855mm
Width (in/mm)	11.7"/300mm		11.6"/292mm	21.5"/546mm	21.5"/546mm
Thickness	.6"		.6"	.6"	
Weight	1.3 lbs.		2 lbs.	2 lbs.	2.6 lbs.
Power	23 W		47W	47W	72W
Single stage charge V	13.8V		13.8V	13.8V	13.8V
Est. Yield (good sun)	6-7Ahs/day		12-14Ahs/day	12-14Ahs/day	18-22Ahs/day
Price	\$319	\$340	\$529	\$529	\$739
Price w/ Forex Back	\$354	N/A	\$589	\$589	\$799

Cable connections

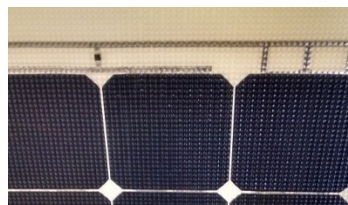


MC4 Quick Connects with junction box and 18" pigtails (Standard, comes with a blank MC4 set for wiring to controller)



Rear Wires for wiring through hard mounting surface (special order)

Panel Options

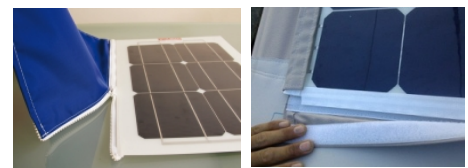


Panels are available with a slip-resistant textured surface (special order)



Back side adhesive for permanent mounting on hard surface (special order \$42)

Installation Options



For Velcro, Zipper, or Grommet Installations, Consult a canvas shop



Rigid plastic backing is available for installations over cross bars or uneven surfaces \$50 to \$100 depending on panel size